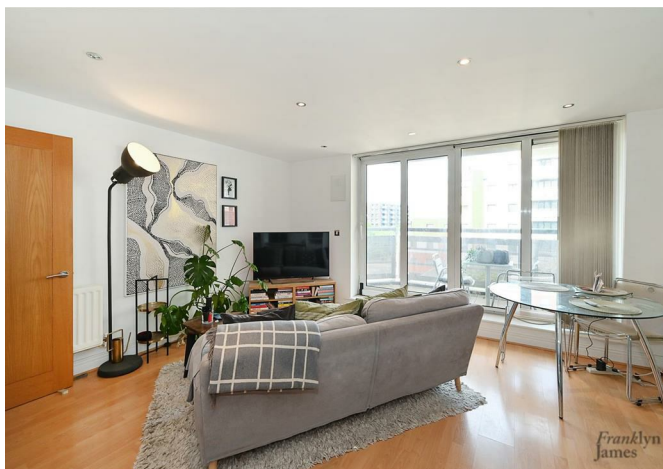




Franklyn James

Wards Wharf Approach, E16 2ER
£1,850 Per Calendar Month

Franklyn James



Wards Wharf Approach, E16 2ER

£1,850 Per Calendar Month

A generous one bedroom apartment situated within the sought after Tradewinds development. This well presented residence offers an inviting entrance hall with ample storage, a spacious reception room with access to a private balcony showcasing panoramic river views, a separate fully fitted kitchen, and a large double bedroom complemented by en-suite shower facilities. A stylish family bathroom completes the layout.

Residents benefit from a range of premium on-site amenities including a 24-hour concierge, a fully equipped gym, a relaxing sauna, and an elegant business lounge.

Conveniently located between Pontoon Dock and Custom House DLR stations, Wards Wharf Approach provides excellent transport links to Canary Wharf, London City Airport, and the wider Docklands area—perfect for professionals and frequent travellers alike.

Description

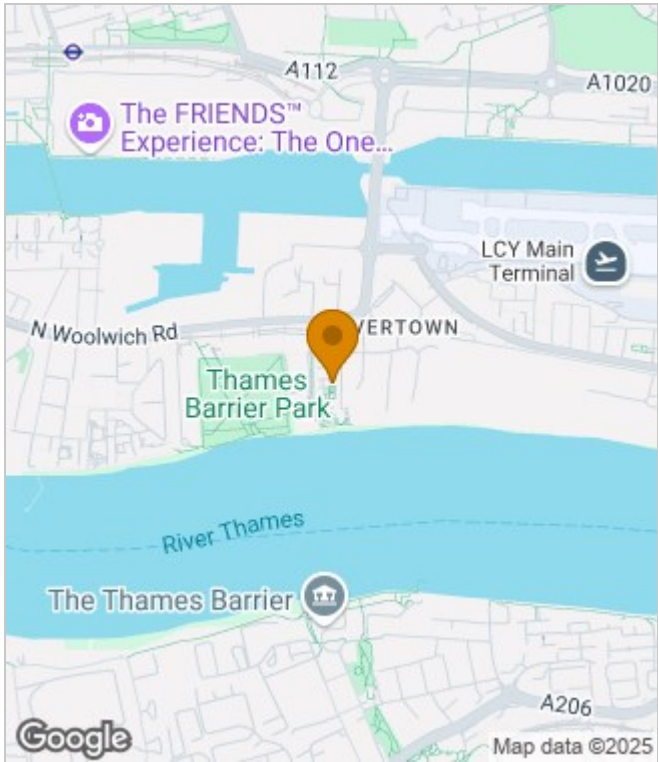
- Furnished
- Spacious one bedroom property
- Impressive Reception room
- Relaxing sauna
- Private Balcony
- Water rates included with rent
- Allocated Parking
- Residents fully equipped gym and Business lounge
- Abundance of natural light
- Moments away from Pontoon Dock and Custom House DLR stations



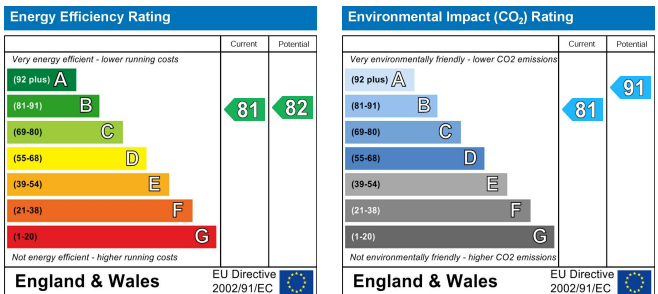
Furnished
Council Tax Band: E
Available: 5th September 2025



Area Map



Energy Performance Graph



These particulars, whilst believed to be accurate are set out as a general outline only for guidance and do not constitute any part of an offer or contract. Intending purchasers should not rely on them as statements of representation of fact, but must satisfy themselves by inspection or otherwise as to their accuracy. No person in this firm's employment has the authority to make or give any representation or warranty in respect of the property.

**Franklyn
James**

60 Westferry Road, London, E14 8JE
Tel: 02070056080 Email: lettings@franklynjames.co.uk <https://www.franklynjames.co.uk>